



HUDSONVILLE TRAILER



"We Know Trailers"

I-196 At Exit 62 • Just West Of Grand Rapids

"We Know Trailers"

OPEN 24 HOURS

Mon. 6:00 am - Fri. 3:00 pm

(616) 896-8900

Email: sales@hudsonvilletrailer.com

*Affordable Excellence
Since 1948*

America's #1 Selling Reefer Trailer for Over 20 Years!



In Stock



New Utility 3000R Reefers,

Hendrickson Ultraa-K air ride suspension, highest rated FLAT FLOORS, patented stainless steel barrier doors, surround foam tech., (7) year wheel end warranty, P-spindles, HEND. Tiremax Pro infl., roll stability, white or black skirts, Carrier or Thermo King units avail., weights starting at just **14,500 lbs. w/unit!!!**

Disc brakes & E-track available!



**Engineered
for reduced
weight
& added
strength!**



New 2020 Utility 4000-DX Composite Wall Vans, 100" I.W., H.D. 16" & 24" O.C. log posts, Hend. Ultraa-K susp. w/Tiremax Pro infl., S.S. rear frame, H.D. 1/4" approach plate, 20K forklift rating, starting at 13,200 lbs. Also available w/R.U. door!

New 2020 Utility 4000-DX TBR Composite Wall Vans, 10" taller & 50% thicker integrated bottom rail, 101" I.W., Hend. air ride susp., Hend. Tiremax Pro infl., 16" & 24" O.C. logistic posts, snag-free foam core walls, 20K forklift rating, S.S. rear frame, only 13,300 lbs.!!! **Coming soon!**

**CUSTOM SPECS
AVAILABLE!**



**ELECTRIC
TARP!**



New Titan 7-axle hopper, (9'-5-9'), 50'x102"x90", all alum. Thinwall construction, air ride w/(4) lifts, alum. whls., HD elec. tarp, haul 1875-bu. legally!

Coming soon!

New Titan live floor trlrs., all alum. Thinwall construction, 53', air ride, 8-axle w/(6) lifts, alum whls., TP axles, Keith floor, w/HD slats, extended wearstrips, hammer seals & splash bearings, Van L Clean Sweep, 145-yd. cap., 56-ton payload!

In stock!

AG & Forestry Financing 4.74%*

*Approved credit. 36-Mo. term. December rates.

CELL #'s CALL: Don (616) 862-5724 • Jeff (616) 291-1594 • Mike (616) 862-6215



HUDSONVILLE TRAILER



"We Know Trailers"

I-196 At Exit 62 • Just West Of Grand Rapids

"We Know Trailers"

OPEN 24 HOURS

Mon. 6:00 am - Fri. 3:00 pm

(616) 896-8900

Email: sales@hudsonvilletrailer.com

*Affordable Excellence
Since 1948*

THINK SPRING, THINK MAC!

NEW 2020 MAC ALUMINUM & STEEL DUMPS IN STOCK TODAY!



IN STOCK! New 2020 MAC alum. triple-ten trains, smooth panel w/steel frame, cast susp., liners, elec. tarps. Add'l. options - alum. frame, air ride, alum. whls., panel floor, wide base tires. **Super trains coming soon!**



In Stock

IN STOCK! New 2020 MAC AR-450 steel quads, 1/2 Round & 22" radius body designs avail., 1/4" body w/3/8" in rear 8', cast susp., dual function high-lift gate, full fenders, pusher bumper, elec. tarp system, avail. w/red or black body. **New MAC steel trains coming soon!**



In Stock



In Stock



New Wilson PaceSetter alum. hoppers, 41'x96", air ride, alum. whls., (2) piece clean dumping hoppers, roller traps, H.D. tarp w/24 mo. warranty. Lots of extras!

In Stock



New Wilson 3-axle alum. hopper, 45'x102" 72" side ht., air ride, alum. whls., black sides, **1200-Bu. legal!**

Coming Soon



New Wilson 8-axle alum. break-up hopper trains, 28'6" x 102" x 78" side ht., air ride tri-axles w/frt. lift and a NEW Wilson air ride dolly, **1900-Bu. legal!**

SILVER STAR



New Wilson livestock trlrs., drop center & straight floor, tdm., spread or tri-axle.

Order yours today!

QUALITY PRE-OWNED TRAILERS

2013 WALKING FLOOR



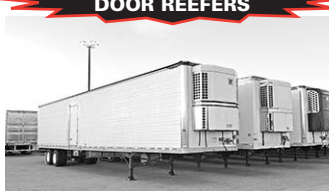
'13 Titan WF trlr., 50', 12'9" O.H., ThinWall, 7-axle (5+9'+9'), air ride w/(3) lifts, TP axles, good virgin tires, Keith floor, cont. splash bearings, side roll tarp, hyd. liftgate, won't last long!

COMBO DROP DECK



'14 Doonan "Platinum" combo drop deck, 48', air ride 10' spread, alum. whls., very good tires, DISC BRAKES, 14" O.C. alum. CM's, winch track, great cond.!

SIDE DOOR REEFERS



(3) '01-'04 Utility & G/Dane reefers, 53', air ride, like new tires, good brakes, TK units, **FLAT** floor, C/S door w/ramp, frt. 1/2 E-track, rear 1/2 log. posts, **VERY CLEAN!**

AFFORDABLE FLATBEDS



(6) '03-'08 Utility combo flatbeds, 48'x102", air ride 10' spread, good tires & brakes, winch track w/winch, storage box, ready to go!

CELL #'s CALL: Don (616) 862-5724 • Jeff (616) 291-1594 • Mike (616) 862-6215