



# TRUDELL TRAILER SALES

### Sales:

Greg Lockhart  
(616) 293-4662  
glockhart@trudellholdings.com

[www.trudelltrailers.com](http://www.trudelltrailers.com)

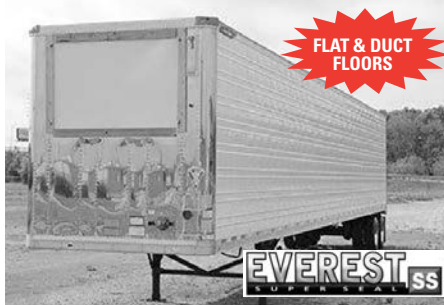
### Sales & Rental:

Chris Becker  
(616) 293-5799  
cbecker@trudellholdings.com

## NEW GREAT DANE TRAILERS IN STOCK.



**Coming in: (50+) 2019 Great Dane 53'x102" dry vans**, air ride, tire inflation system, skirts, sliding tandem, 50" & 24" logistic posts.



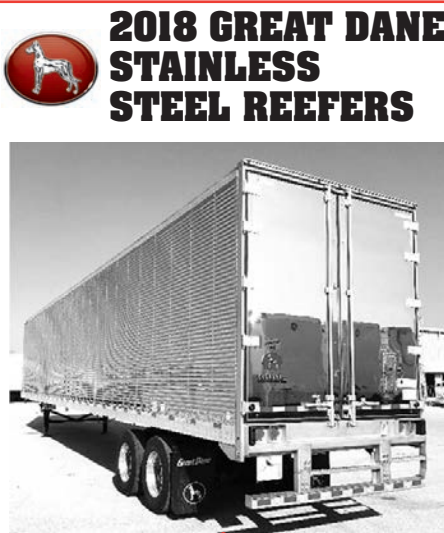
**2018 Great Dane Everest Super Seal reefers**, 53'x102" air ride sliding tandem, **DUCT FLOORS/FLAT FLOORS**, stainless steel rear frame and doors.



**New 2018 Great Dane flats**, 48' & 53' aluminum, combo, steel and drop decks.



**2014 Great Dane reefers**, 53'x102", duct floors, Carrier units, air ride, skirts, trailer tail, air chute, aluminum wheels, tire inflation system, large quantity available.



### 2018 GREAT DANE STAINLESS STEEL REEFERS

COMPLETE STAINLESS STEEL

53'x102",  
complete stainless,  
heavy duty aluminum  
flat floor, disc brakes,  
many extras.



**2006 Great Dane reefers**, 53'x102", Carrier units, flat floor, logistic posts, air ride, sliding tandem.



**2006 Great Dane 53'x102" dry vans**, swing doors, aluminum roof, spring ride.



**2004-2007 Wabash 53'x102" dry vans**, translucent & aluminum roof, spring & air ride, limited number of stainless steel doors, sheet & post & composite options.



Great Dane

6634 Center Industrial Dr., Jenison, MI

**(616) 777-0890**

FAX (616) 777-0900



Great Dane

**SERVICE HOURS:** Monday-Thursday 7:00 am-5:30 pm, Friday 7:00 am-3:30 pm

**PARTS HOURS:** Monday-Friday 7:30 am-4:00 pm



## RENTALS

# STORAGE & CARTAGE TRAILERS

*Clean, Well Maintained Equipment*

*Swing Door & Roll-Up Door Units Available*



# Trailer Rentals

- *Delivery Available*
- *Flexible Terms*
- *Perfect for Job Site Trailers, Storage and More!*
- *Weekly & Monthly Rates*
- *Immediate Availability*
- *Great for Seasonal Needs*

**Contact Chris Becker at 616-293-5799 or [cbecker@trudellholdings.com](mailto:cbecker@trudellholdings.com)**



**Great Dane**

6634 Center Industrial Dr., Jenison, MI

**(616) 777-0890**

FAX (616) 777-0900



**Great Dane**

**SERVICE HOURS:** Monday-Thursday 7:00 am-5:30 pm, Friday 7:00 am-3:30 pm

**PARTS HOURS:** Monday-Friday 7:30 am-4:00 pm